



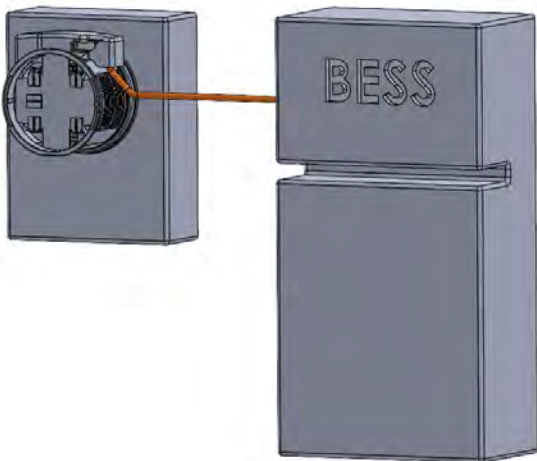
IslandDER™ METER SOCKET ADAPTER

The **IslandDER Meter Socket Adapter (MSA)** is designed to enable rapid installation of a Microgrid Interconnect Device (MID), allowing for a safe, streamlined, and cost-effective method of "islanding" the home, without the need for expensive service / main panel upsizing.



MID INTEGRATION FOR RESIDENTIAL DISTRIBUTED ENERGY RESOURCES
COMPATIBLE WITH MULTIPLE INDUSTRY LEADING BATTERY ENERGY STORAGE SYSTEMS (BESS),

Simply Plug & Play



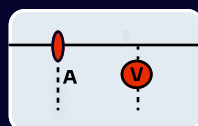
- Removes key barriers to both CT and MID installation in meter-main combination panels, thus avoiding service panel replacements and circuit relocation.
- Supports multiple common and emerging use cases: whole-home backup via stationary storage or vehicle-to-home (V2H), partial-home backup, TOU load shifting / energy arbitrage, self-consumption and more.
- Designed for NEC compliance, listed to industry standards (UL 414 SA, SB, SC).
- Integrated CTs, voltage sensing and MID control framework for easy integration into UL 1741 / 3141 / 9741 compliant system and PCS support.¹
- Extensible design will support additional model with supply-side power connection, overcurrent protection and an integrated energy management system.
- Pluggable, reversible hardwired data connection from MSA to supported 3rd party equipment¹, for quick and reliable communications and control. Toolless removal allows easy meter socket inspection.
- Compatible with 2S and 12S meter forms, as well as ring, ringless, lever and horn bypass meter sockets.
- Backed by a 12.5-year warranty.

1. When used in combination with a supported UL 1741/3141/9741 system that has been specifically evaluated for use with IslandDER.

CONTACT US TO LEARN MORE

www.connectder.com
info@connectder.com
Tel: (703) 232-1427

KEY COMPONENTS WITHIN AN ISLANDDER MSA



**CURRENT + VOLTAGE
MEASUREMENT**



MID



DATA INTERFACE

MECHANICAL SPECIFICATIONS

ENCLOSURE RATING	NEMA 3R	TYPE	Discrete sensing, control, status, and 12V power signals
ENCLOSURE TYPE	Injection Molded Polycarbonate, UL 94 5VA flame rating	CABLE	Pre-assembled, Multi-conductor, Outdoor/UV rated
THERMAL MANAGEMENT	Passive Cooling, Heat Sinks	CONNECTION	Factory-Wired Pluggable Connection, Weathertight, Reversible at Top of MSA, Pre-attached connector to 3rd party equipment
OPTIONAL NEUTRAL CONNECTION	Wired to Meter Socket or 5th Stab Options	POWER	12V DC bus to/from 3rd party system, Max 5W power supply available to 3rd party system from grid side of MID (load side of meter)
DIMENSIONS (W x H x D)	6.7" x 7.8" x 4.9" (with pluggable Connection Module)	CURRENT SENSING	ANSI 0.2 Accuracy Class CTs for Revenue Grade Sensing, Additional line and load side (of MID) Rogowski Coils at < 5% accuracy
WEIGHT	5.55 lbs. / 2.52 kg (with Connection Module and 6 ft analog cable)	VOLTAGE SENSING	Line and Load side (of MID) - 0.4% Accuracy at Ambient, 1% Across Temperature Range
SHIPPING WEIGHT	7.75 lbs (3.51 kg)	MID CONTROL	Discrete open/close signals with 1ms input noise rejection, Actuation time < 15 ms
MOUNTING SYSTEM	Blade interface with 4-jaw or 5-jaw meter socket	MSA STATUS	Discrete signals for: MID open/close status, manual MID override interlock, MID ready, grid power present, MSA fault
ELECTRIC METER COMPATIBILITY	Type 2S, 12S	INTERNAL TEMPERATURE SENSING	-58°F to 302°F (-50°C to 150°C)
METER SOCKET COMPATIBILITY	Ringless, Ring-type, Lever, Horn Bypass		
MANUAL MID OVERRIDE	Externally Accessible Switch, Protected by (Dry Contact) Interlocked Tool-Access Cover		

RATINGS

VOLTAGE	208V, 240V	EMISSIONS	FCC CFR Part 15 Class B, ANSI C12 / IEC 61000
MAX CONTINUOUS CURRENT	200A	ETL FILE NUMBER	5028888
SHORT CIRCUIT RATING	22k AIC ₂	AMBIENT AIR OPERATING TEMPERATURE RANGE	-22°F to 149°F (-30°C to 65°C)
MID RATED CYCLES	10,000	AMBIENT AIR STORAGE TEMPERATURE RANGE	-40°F to 176°F (-40°C to 80°C)
APPLICABLE SAFETY STANDARDS	UL 414 SA, SB, SC – Meter Sockets, UL 1741 / 3141 / 9741 system ready		



2. Rating independent of any external load side overcurrent devices

