

# SolarEdge Nexis IslandDER™

Adapter designed to provide a safe, streamlined, and cost-effective way to island home without expensive main panel upgrades



**MID INTEGRATION FOR RESIDENTIAL DISTRIBUTED ENERGY RESOURCES**  
COMPATIBLE WITH SOLAREGE NEXIS



## Simply Plug & Play

- Helps avoid main panel upgrades (MPUs) by simplifying CT and MID installations.
  - Built-in PCS certification
- Customer-friendly, lower installation costs, fewer visible components for a streamlined aesthetic
- Supports multiple common and emerging use cases: whole-home backup, partial-home backup, TOU load shifting / energy arbitrage, self-consumption and more.
- Designed for NEC compliance, listed to industry standards (UL 414 SA, SB, SC).
- Integrated CTs, voltage sensing and MID control framework for easy integration into UL 1741 / 3141 / 9741 compliant system and PCS support.
- Pluggable, reversible hardwired data connection from MSA to SolarEdge Nexis Inverter for quick and reliable communications and control. Toolless removal allows easy meter socket inspection.
- Compatible with 2S and 12S meter forms, as well as ring, ringless, lever and horn bypass meter sockets.
- Backed by a 12.5-year warranty.

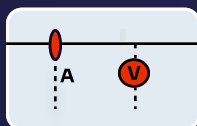
1. When used in combination with a supported UL 1741/3141/9741 system that has been specifically evaluated for use with SolarEdge Nexis IslandDER™.

## CONTACT US

[solaredge.com/us/contact-us](https://solaredge.com/us/contact-us)

[solaredge.com](https://solaredge.com)

## KEY COMPONENTS OF THE ISLANDDER™ MSA



CURRENT + VOLTAGE MEASUREMENT



MID



DATA INTERFACE

### MECHANICAL SPECIFICATIONS

### COMMUNICATIONS

<b>ENCLOSURE RATING</b>	NEMA 3R	<b>TYPE</b>	Discrete sensing, control, status, and 12V power signals
<b>ENCLOSURE TYPE</b>	Injection Molded Polycarbonate, UL 94 5VA flame rating	<b>CABLE</b>	Field-installed, Outdoor/UV rated ethernet cable
<b>THERMAL MANAGEMENT</b>	Passive Cooling, Heat Sinks	<b>CONNECTION</b>	Field-wired from Connection Module SolarEdge Nexis Inverter, Pluggable, Weathertight RJ45 Connection with sealing boot, Reversible at top of MSA
<b>OPTIONAL NEUTRAL CONNECTION</b>	Wired to Meter Socket or 5th Stab Options	<b>POWER</b>	12V DC bus to/from SolarEdge Nexis Inverter, Max 5W power supply available to SolarEdge Nexis Inverter from grid side of MID (load side of meter)
<b>DIMENSIONS (W x H x D)</b>	(W) 7.6" x (H) 7.8" x (D) 4.9"	<b>MSA CURRENT SENSING</b>	ANSI 0.2 Accuracy Class CTs for Revenue Grade Sensing
<b>WEIGHT</b>	5.65 lbs / 2.56 kg (with Connection Module)	<b>MSA VOLTAGE SENSING</b>	Line and Load side (of MID) - 0.4% Accuracy at Ambient, 1% Across Temperature Range
<b>SHIPPING WEIGHT</b>	7.3 lbs (3.31 kg)	<b>MID CONTROL</b>	Discrete open/close signals with 1ms input noise rejection, Actuation time < 15 ms
<b>MOUNTING SYSTEM</b>	Blade interface with 4-jaw or 5-jaw meter socket	<b>MSA STATUS</b>	Discrete signals for: MID open/close status, manual MID override interlock, MID ready, grid power present, MSA fault
<b>ELECTRIC METER COMPATIBILITY</b>	Type 2S, 12S	<b>INTERNAL TEMPERATURE SENSING</b>	-58°F to 302°F (-50°C to 150°C)
<b>METER SOCKET COMPATIBILITY</b>	Ringless, Ring-type, Lever, Horn Bypass	<b>WHOLE PRODUCT SENSING ACCURACY</b>	Current <1% Voltage < 1% at ambient, <1.6% across temperature range
<b>MANUAL MID OVERRIDE</b>	Externally Accessible Switch, Protected by (Dry Contact) Interlocked Tool-Access Cover		

### RATINGS

<b>VOLTAGE</b>	208V, 240V	<b>EMISSIONS</b>	FCC CFR Part 15 Class B, ANSI C12 / IEC 61000
<b>MAX CONTINUOUS CURRENT</b>	200A	<b>ETL FILE NUMBER</b>	5028888
<b>SHORT CIRCUIT RATING</b>	22k AIC <sub>3</sub>	<b>AMBIENT AIR OPERATING TEMPERATURE RANGE</b>	-22°F to 149°F (-30°C to 65°C)
<b>MID RATED CYCLES</b>	10,000	<b>AMBIENT AIR STORAGE TEMPERATURE RANGE</b>	-40°F to 176°F (-40°C to 80°C)
<b>APPLICABLE SAFETY STANDARDS</b>	UL 414 SA, SB, SC – Meter Sockets, UL 1741 / 3141 / 9741 system ready		



2. The specifications and information in this preliminary datasheet are subject to extended validation and change. No warranty, either implied or explicit, is given regarding delivery, accuracy, or performance. ConnectDER reserves the right to modify its technical information and product specifications at any time without notice.  
3. Rating independent of any external load side overcurrent devices

