

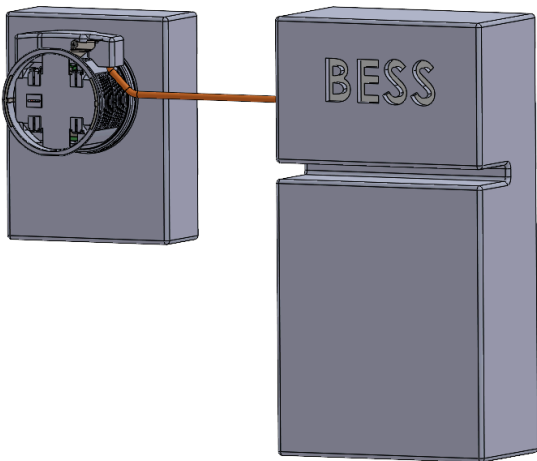
IslandDER™ METER SOCKET ADAPTER

The **IslandDER Meter Socket Adapter (MSA)** is designed to enable rapid installation of a Microgrid Interconnect Device (MID), allowing for a safe, streamlined, and cost-effective method of "islanding" the home, without the need for expensive service / main panel upsizing.



MID INTEGRATION FOR RESIDENTIAL DISTRIBUTED ENERGY RESOURCES
COMPATIBLE WITH MULTIPLE INDUSTRY LEADING BATTERY ENERGY STORAGE SYSTEMS (BESS)¹

Simply Plug & Play



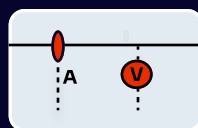
- Removes key barriers to both CT and MID installation in meter-main combination panels, thus avoiding service panel replacements and circuit relocation.
- Supports multiple common and emerging use cases: whole-home backup via stationary storage or vehicle-to-home (V2H), partial-home backup, TOU load shifting / energy arbitrage, self-consumption and more.
- Designed for NEC compliance, listed to industry standards (UL 414 SA, SB, SC).
- Integrated CTs, voltage sensing and MID control framework for easy integration into UL 1741 / 3141 / 9741 compliant system and PCS support.¹
- Extensible design will support additional model with supply-side power connection, overcurrent protection and an integrated energy management system.
- Pluggable, reversible hardwired data connection from MSA to supported 3rd party equipment¹, for quick and reliable communications and control. Toolless removal allows easy meter socket inspection.
- Compatible with 2S and 12S meter forms, as well as ring, ringless, lever and horn bypass meter sockets.

1. When used in combination with a supported UL 1741/3141/9741 system that has been specifically evaluated for use with IslandDER.

CONTACT US TO LEARN MORE

www.connectder.com
info@connectder.com
Tel: (703) 232-1427

KEY COMPONENTS WITHIN AN ISLANDDER MSA



**CURRENT + VOLTAGE
MEASUREMENT**



MID



DATA INTERFACE

MECHANICAL SPECIFICATIONS

ENCLOSURE RATING	NEMA 3R
ENCLOSURE TYPE	Injection Molded Polycarbonate, UL 94 5VA flame rating
THERMAL MANAGEMENT	Passive Cooling, Heat Sinks
OPTIONAL NEUTRAL CONNECTION	Wired to Meter Socket or 5th Stab Options
DIMENSIONS (W x H x D)	6.7" x 7.8" x 4.9" (with pluggable Connection Module)
WEIGHT	5.55 lbs. / 2.52 kg (with Connection Module and 6 ft analog cable)
SHIPPING WEIGHT	7.75 lbs (3.51 kg)
MOUNTING SYSTEM	Blade interface with 4-jaw or 5-jaw meter socket
ELECTRIC METER COMPATIBILITY	Type 2S, 12S
METER SOCKET COMPATIBILITY	Ringless, Ring-type, Lever, Horn Bypass
MANUAL MID OVERRIDE	Externally Accessible Switch, Protected by (Dry Contact) Interlocked Tool-Access Cover

COMMUNICATIONS

TYPE	Discrete sensing, control, status, and 12V power signals
CABLE	Pre-assembled, Multi-conductor, Outdoor/UV rated
CONNECTION	Factory-Wired Pluggable Connection, Weathertight, Reversible at Top of MSA, Pre-attached connector to 3rd party equipment
POWER	12V DC bus to/from 3rd party system, Max 5W power supply available to 3rd party system from grid side of MID (load side of meter)
CURRENT SENSING	ANSI 0.2 Accuracy Class CTs for Revenue Grade Sensing, Additional line and load side (of MID) Rogowski Coils at < 5% accuracy
VOLTAGE SENSING	Line and Load side (of MID) - 0.4% Accuracy at Ambient, 1% Across Temperature Range
MID CONTROL	Discrete open/close signals with 1ms input noise rejection, Actuation time < 15 ms
MSA STATUS	Discrete signals for: MID open/close status, manual MID override interlock, MID ready, grid power present, MSA fault
INTERNAL TEMPERATURE SENSING	-58°F to 302°F (-50°C to 150°C)

RATINGS

VOLTAGE	208V, 240V	APPLICABLE SAFETY STANDARDS	UL 414 SA, SB, SC – Meter Sockets, UL 1741 / 3141 / 9741 system ready
MAX CONTINUOUS CURRENT	200A	EMISSIONS	FCC CFR Part 15 Class B, ANSI C12 / IEC 61000
SHORT CIRCUIT RATING	22k AIC ₂	ETL FILE NUMBER	5028888
MID RATED CYCLES	10,000	AMBIENT AIR OPERATING TEMPERATURE RANGE	-22°F to 149°F (-30°C to 65°C)
WARRANTY	12 Years	AMBIENT AIR STORAGE TEMPERATURE RANGE	-40°F to 176°F (-40°C to 80°C)



2. Rating independent of any external load side overcurrent devices

